

MC3R Antibody (C-term)
Purified Rabbit Polyclonal Antibody (Pab)
Catalog # AP21431b**Specification**

MC3R Antibody (C-term) - Product Information

Application	WB,E
Primary Accession	P41968
Reactivity	Human, Mouse
Host	Rabbit
Clonality	polyclonal
Isotype	Rabbit IgG
Calculated MW	36043

MC3R Antibody (C-term) - Additional Information**Gene ID** 4159**Other Names**

Melanocortin receptor 3, MC3-R, MC3R

Target/Specificity

This MC3R antibody is generated from a rabbit immunized with a KLH conjugated synthetic peptide between 301-335 amino acids from the C-terminal region of human MC3R.

Dilution

WB~~1:2000

E~~Use at an assay dependent concentration.

Format

Purified polyclonal antibody supplied in PBS with 0.09% (W/V) sodium azide. This antibody is purified through a protein A column, followed by peptide affinity purification.

Storage

Maintain refrigerated at 2-8°C for up to 2 weeks. For long term storage store at -20°C in small aliquots to prevent freeze-thaw cycles.

Precautions

MC3R Antibody (C-term) is for research use only and not for use in diagnostic or therapeutic procedures.

MC3R Antibody (C-term) - Protein Information**Name** MC3R

Function Receptor for MSH (alpha, beta and gamma) and ACTH. This receptor is mediated by G proteins which activate adenylate cyclase. Required for expression of anticipatory patterns of activity and wakefulness during periods of limited nutrient availability and for the normal

regulation of circadian clock activity in the brain.

Cellular Location

Cell membrane; Multi-pass membrane protein.

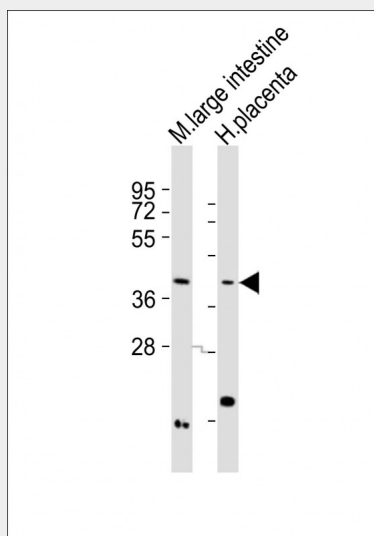
Tissue Location

Brain, placental, and gut tissues.

MC3R Antibody (C-term) - Protocols

Provided below are standard protocols that you may find useful for product applications.

- [Western Blot](#)
- [Blocking Peptides](#)
- [Dot Blot](#)
- [Immunohistochemistry](#)
- [Immunofluorescence](#)
- [Immunoprecipitation](#)
- [Flow Cytometry](#)
- [Cell Culture](#)

MC3R Antibody (C-term) - Images

All lanes : Anti-MC3R Antibody (C-term) at 1:2000 dilution Lane 1: mouse large intestine lysates Lane 2: human placenta lysates Lysates/proteins at 20 µg per lane. Secondary Goat Anti-Rabbit IgG, (H+L), Peroxidase conjugated at 1/10000 dilution Predicted band size : 36 kDa Blocking/Dilution buffer: 5% NFDM/TBST.

MC3R Antibody (C-term) - Background

Receptor for MSH (alpha, beta and gamma) and ACTH. This receptor is mediated by G proteins which activate adenylate cyclase. Required for expression of anticipatory patterns of activity and wakefulness during periods of limited nutrient availability and for the normal regulation of circadian clock activity in the brain.

MC3R Antibody (C-term) - References

Gantz I.,et al.J. Biol. Chem. 268:8246-8250(1993).
Kopatz S.A.,et al.Submitted (JAN-2003) to the EMBL/GenBank/DDBJ databases.
Deloukas P.,et al.Nature 414:865-871(2001).
Tarnow P.,et al.Obes. Facts 5:45-51(2012).
Lee Y.-S.,et al.J. Clin. Endocrinol. Metab. 87:1423-1426(2002).